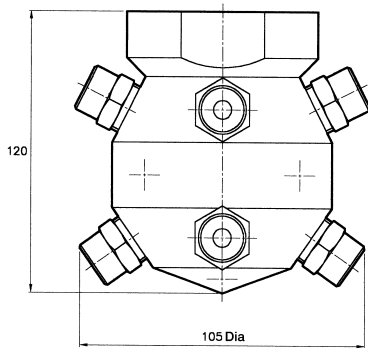




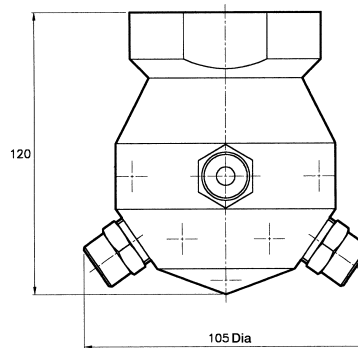
CIP 15 ASSEMBLY

Approx. weight of assembly=1.34Kg

Maximum Recommended Pressure:
35 Bar.G. (Metal), 7 Bar.G. (Plastic).



CIP 15 - FC



CIP 15

SPRAY CHARACTERISTICS

- Relatively uniform distribution at all pressures.
- Available in a range of flow capacities.
- The CIP15 is used in place of a standard full cone nozzle, where finer atomisation than a single nozzle might normally provide is required.
- Normal spray angle is 230°.
- For full 360° coverage with type CIP15 the assembly is identified with the suffix 'FC'.

CONSTRUCTION AND MATERIALS

- Manufactured with a 1½" BSPT Female threaded body fitted with 15 removable solid cone spray nozzles.
- Made in Stainless Steel, Gunmetal/Brass as standard.
- Other nozzles can be fitted to give non-standard spray patterns.
- Other material available to special order.

ORDER EXAMPLE

1½" CIP15-150 Stainless Steel.

1½" CIP15-150-FC P.T.F.E.

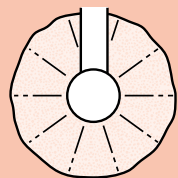
APPROX. DIAMETER OF COVERAGE (mm)

Assembly Numbers	Pressure Bar. G.		
	1,0	3,0	5,0
CIP 15-FC 100/190	800	1550	1750
CIP 15-FC 250/380	1000	1850	2100
CIP 15-FC 430/550	1200	2250	2600
CIP 15- 100/200	900	1600	1900
CIP 15- 275/380	1050	1900	2250
CIP 15- 470/550	1400	2500	2950

CAPACITY CHART

ASSEMBLY NUMBER	NOZZLES	FLOW RATE IN LITRES/MIN AT Bar.G.							
		0,7	1,0	2,0	3,0	4,0	5,0	6,0	7,0
1.½" CIP 15 -100	¼" BIM 6	18,75	22,50	28,20	32,70	39,75	44,44	51,15	53,10
1.½" CIP 15 -140	¼" BIM 8	27,90	34,20	42,60	48,15	60,00	67,08	80,70	85,80
1.½" CIP 15 -200	¼" BIM 12	41,85	51,15	61,35	68,25	79,95	89,39	105,30	113,70
1.½" CIP 15 -275	⅜" BIM 16	53,70	66,15	79,50	92,10	109,05	121,92	142,65	150,60
1.½" CIP 15 -350	⅜" BIM 20	66,90	81,90	97,50	113,10	135,90	151,94	178,80	189,45
1.½" CIP 15 -380	⅜" BIM 22	76,65	93,60	112,65	124,80	146,70	164,02	198,45	213,60
1.½" CIP 15 -470	⅜" BIM 27	90,60	111,30	135,15	151,50	184,80	206,61	240,90	262,05
1.½" CIP 15 -550	⅜" BIM 32	108,75	133,20	162,15	184,80	216,60	242,17	289,35	306,00

1.½" CIP 15 -100 FC	¼" BNM 6	18,75	22,50	32,70	39,75	43,05	48,13	51,15	53,10
1.½" CIP 15 -140 FC	¼" BNM 8	27,90	34,20	48,45	60,00	68,25	76,31	80,70	85,80
1.½" CIP 15 -190 FC	¼" BNM 11	41,85	48,45	64,65	77,25	81,75	91,40	100,95	111,45
1.½" CIP 15 -250 FC	¼" BNM 15	55,05	67,50	83,85	99,60	108,60	121,42	130,50	137,40
1.½" CIP 15 -300 FC	¼" BNM 18	66,00	80,85	100,50	119,40	130,20	145,57	156,45	164,70
1.½" CIP 15 -380 FC	⅜" BNM 22	83,70	102,60	127,50	151,50	165,15	184,64	198,45	209,10
1.½" CIP 15 -430 FC	⅜" BNM 25	90,60	108,60	139,80	165,15	184,80	206,61	219,75	236,40
1.½" CIP 15 -550 FC	⅜" BNM 32	115,50	137,25	178,80	214,50	236,70	264,64	283,50	298,50



Contact our Helpline for any special requirements:
Tel: +44 (0) 151 424 6821
Fax: +44 (0) 151 495 1043
e-mail:sales@delavan.co.uk
Web:www.delavan.co.uk